

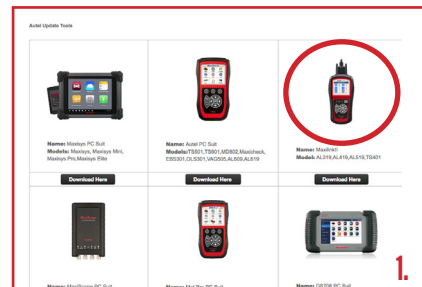
Update Instructions AL319, AI419, AI519, AL439, MS609 & TS401

This sheet uses the TS401 as an example. The above listed tools are also updated with the MaxiLinkII software, Step 1. In Step 2, download the appropriate software for your tool. Continue to follow Step 3 and Step 4, substituting your tool for the TS401.

1. Download & Install MaxiLinkII Software

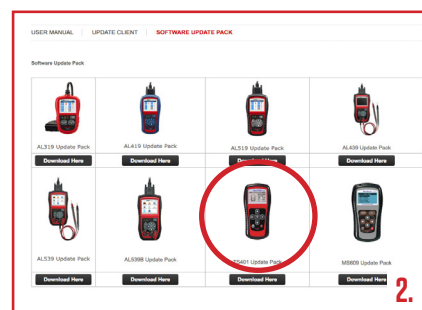
The TS401 is updated via the MaxiLinkII software (installed on a Windows PC) and by downloading the Update file from the Autel.com website.

The Maxilink II software is available at <http://support.autel.com/support/solutions/folders/8000079030>. From the homepage, www.autel.com, go to **Support & Updates**, then select **Update Client**, and click on the **Download Here** button under MaxiLinkII. To unzip the file, right-mouse click on the file and select **Extract All**. Double-click on **Setup.exe** to install.



2. Download TS401 Update

To download software updates, click here, <http://support.autel.com/support/solutions/folders/8000079080>, then select **Software Update Pack**. Or from the homepage, www.autel.com, click on **Support & Updates**, then **Firmware & Downloads**, and click the **Software Update Pack** tab. Under the TS401 listing, click the **Download Here** button to download the zip file. To unzip the file, right-mouse click on the file and select **Extract All**. Remember to note the location of extracted folder.



3. Connect Tool to PC

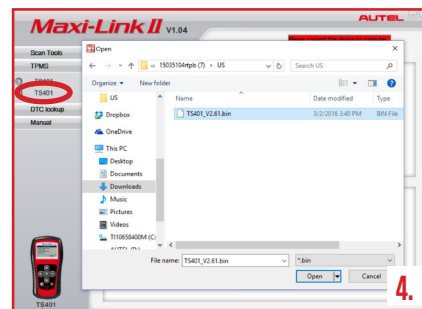
Connect tool to the computer using the supplied USB and select **Update Mode** on the tool.



4. Update the Tool

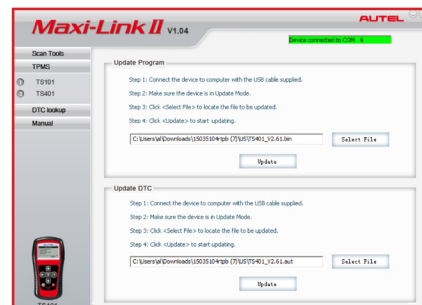
IMPORTANT: Both the TS401 file and the DTC file must be updated for the tool to function correctly.

Launch MaxiLinkII on the PC and then select **TS401** on the left-hand side of the screen under the TPMS tab. Under **Update Program**, click on **Select File** and browse to the software update you downloaded. Open the folder labelled **GL**, select the file within (the file extension is **.bin**) and click on **Update**.



The application will communicate with the tool and update. The PC application and the tool will display a message once the update is completed.

Next, under **Update DTC**, click on **Select File**, browse to file (the file extension is **.aut**) and click on **Open**, and then click on **Update**.



The application will communicate with the tool and update its software. The PC application and the tool will display a message once the update is completed.

Now your tool is ready to use!